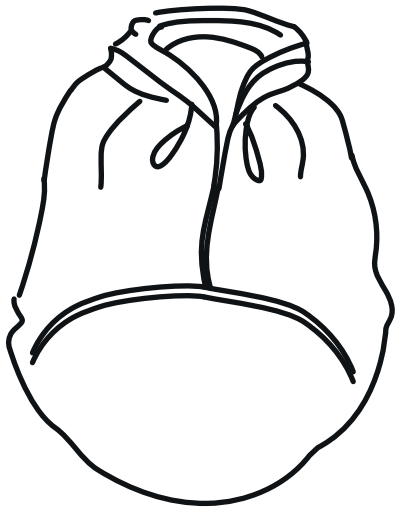


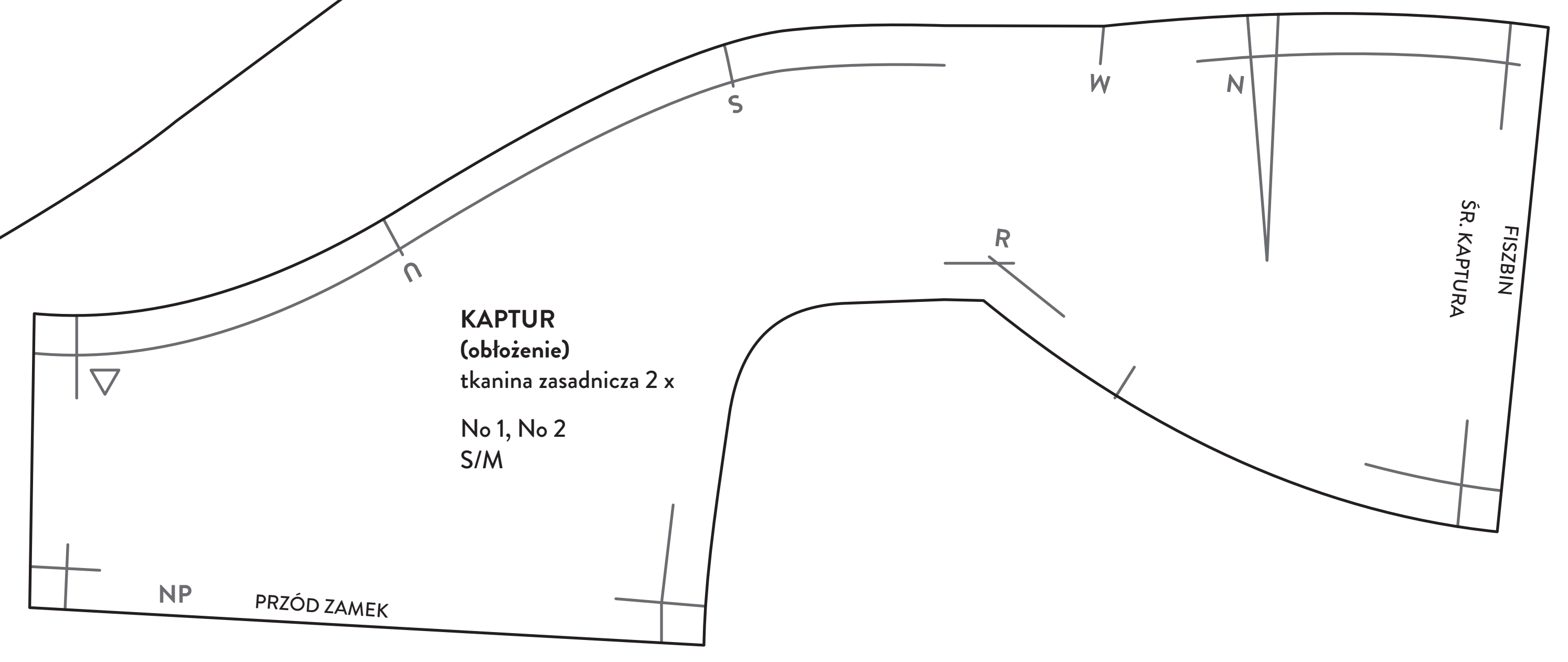
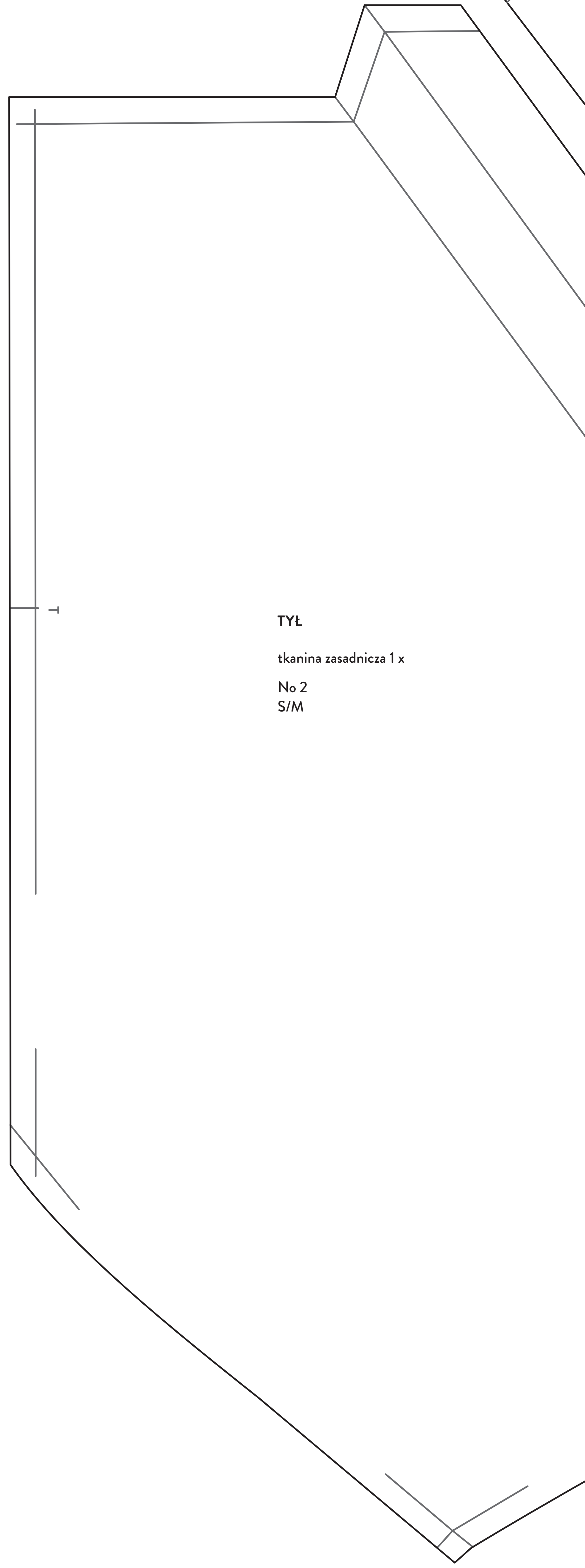
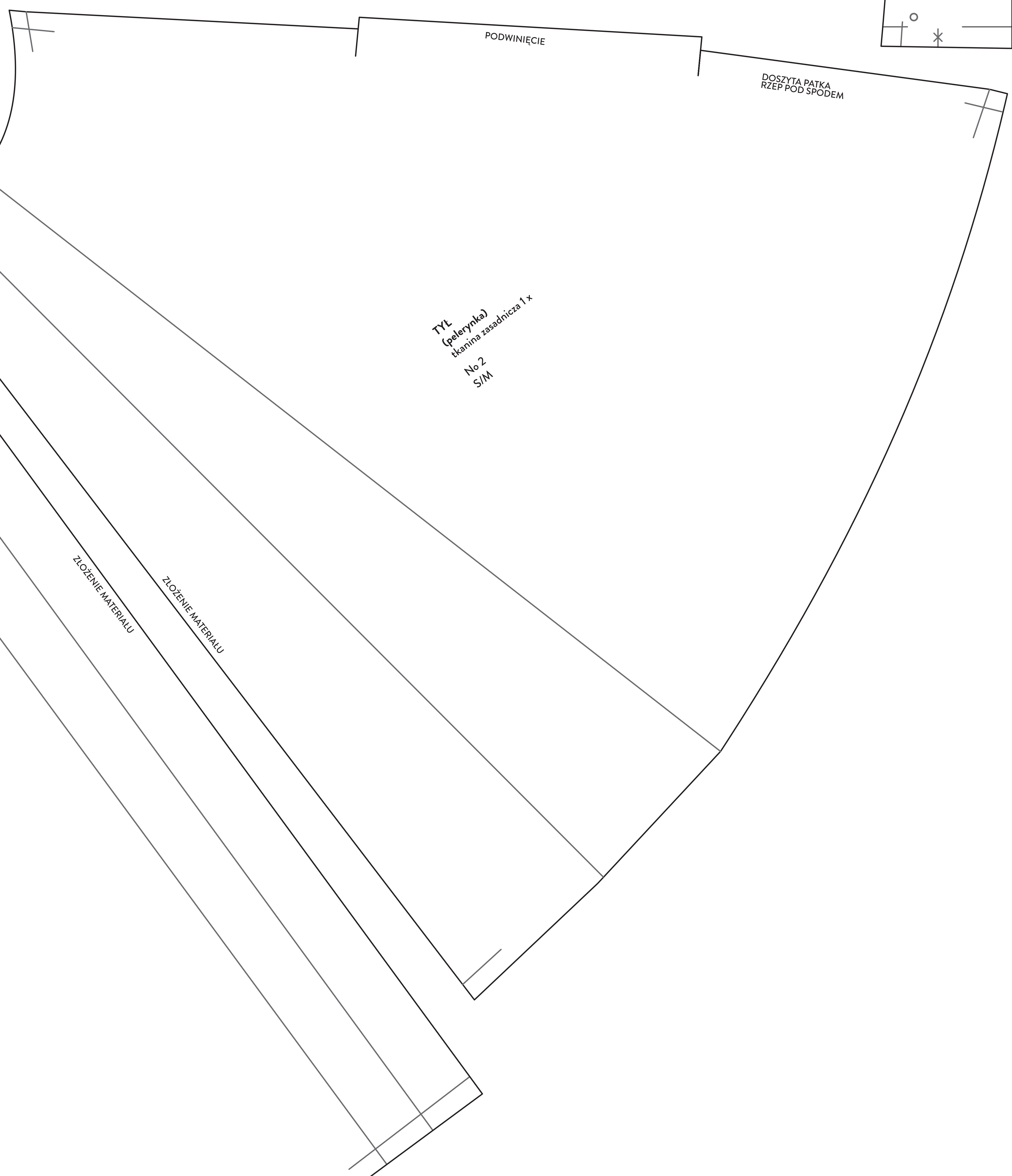
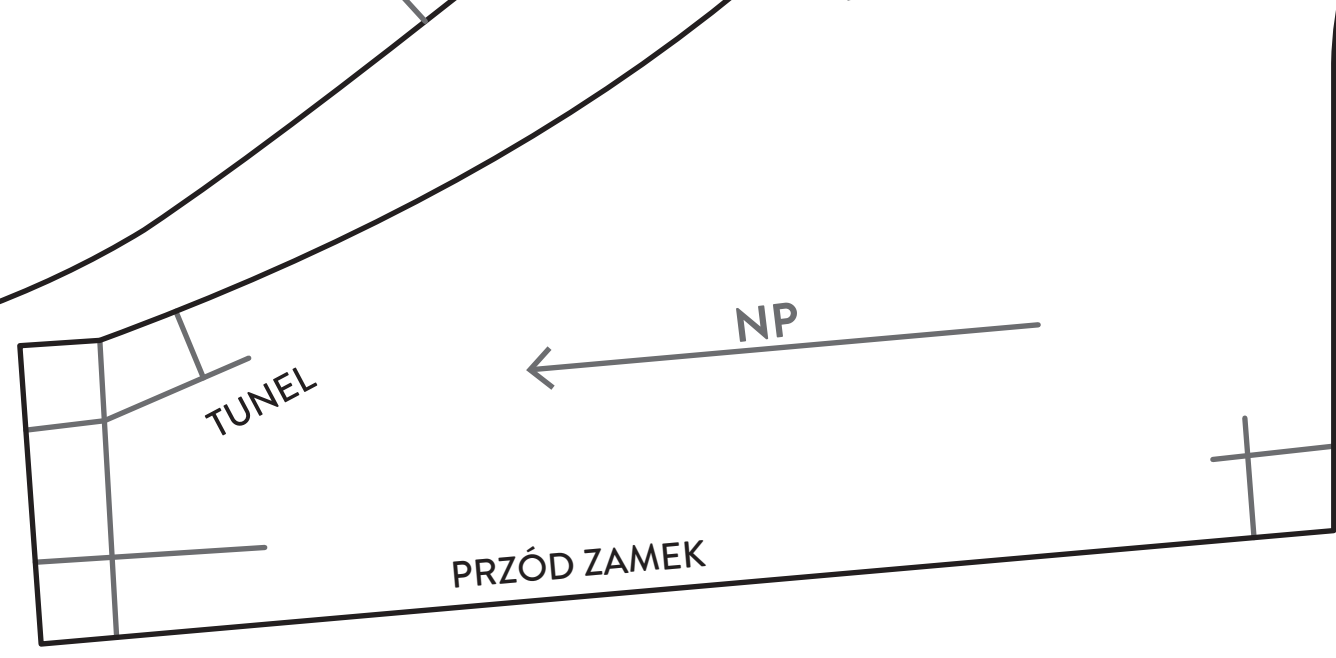
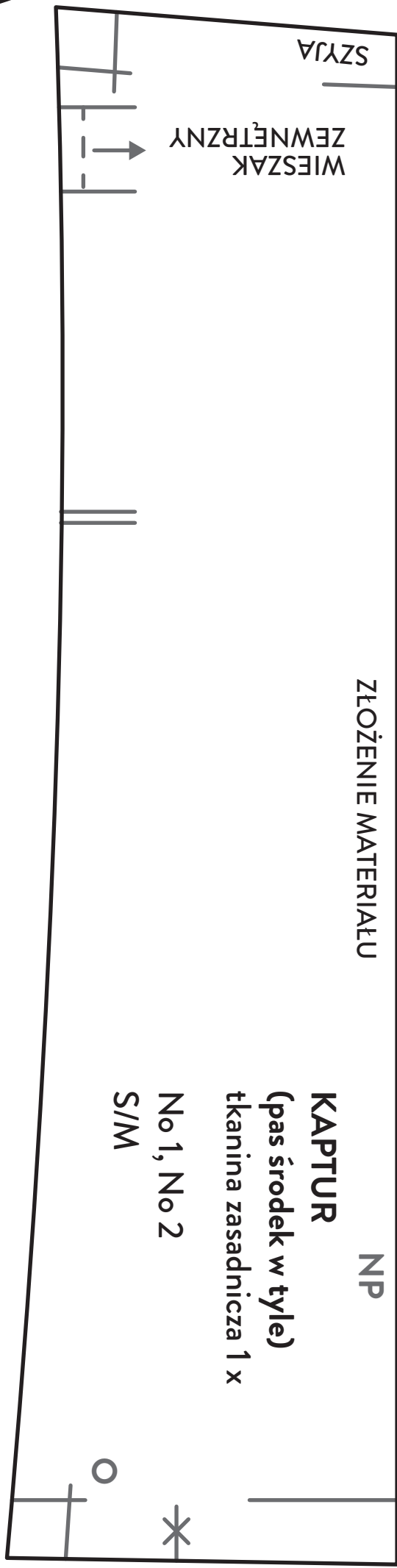
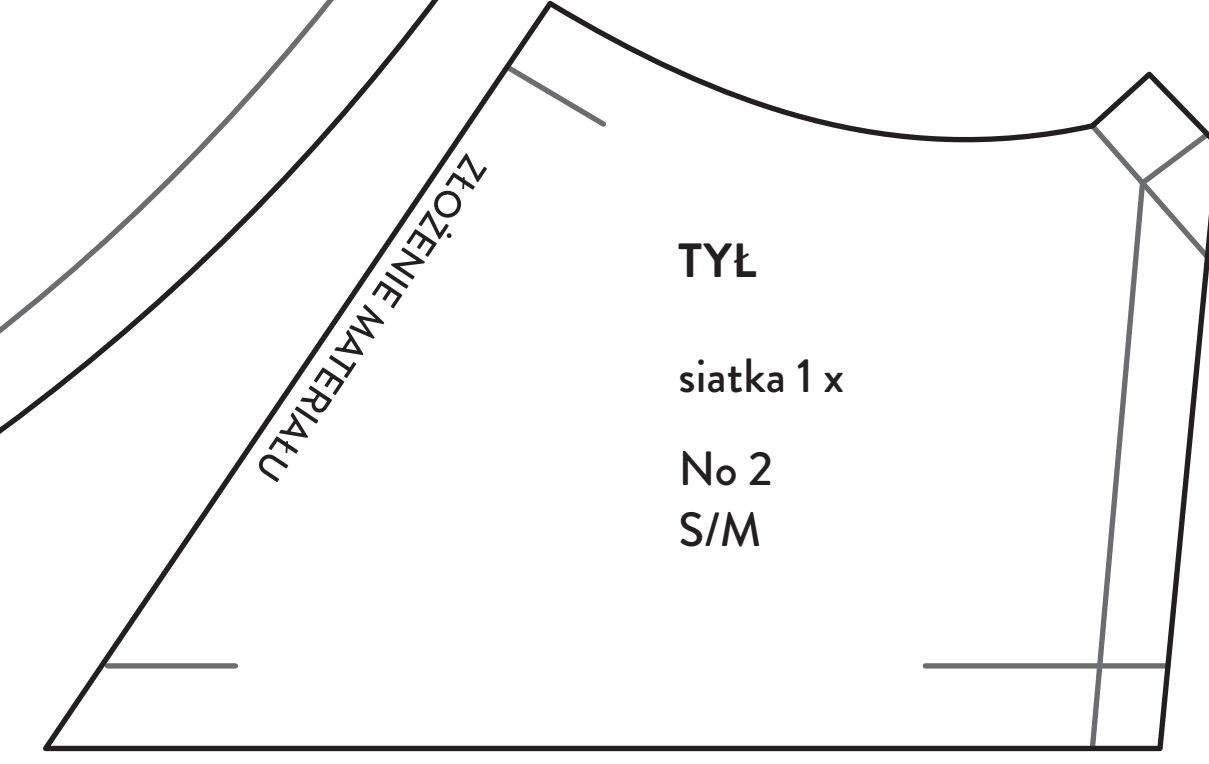
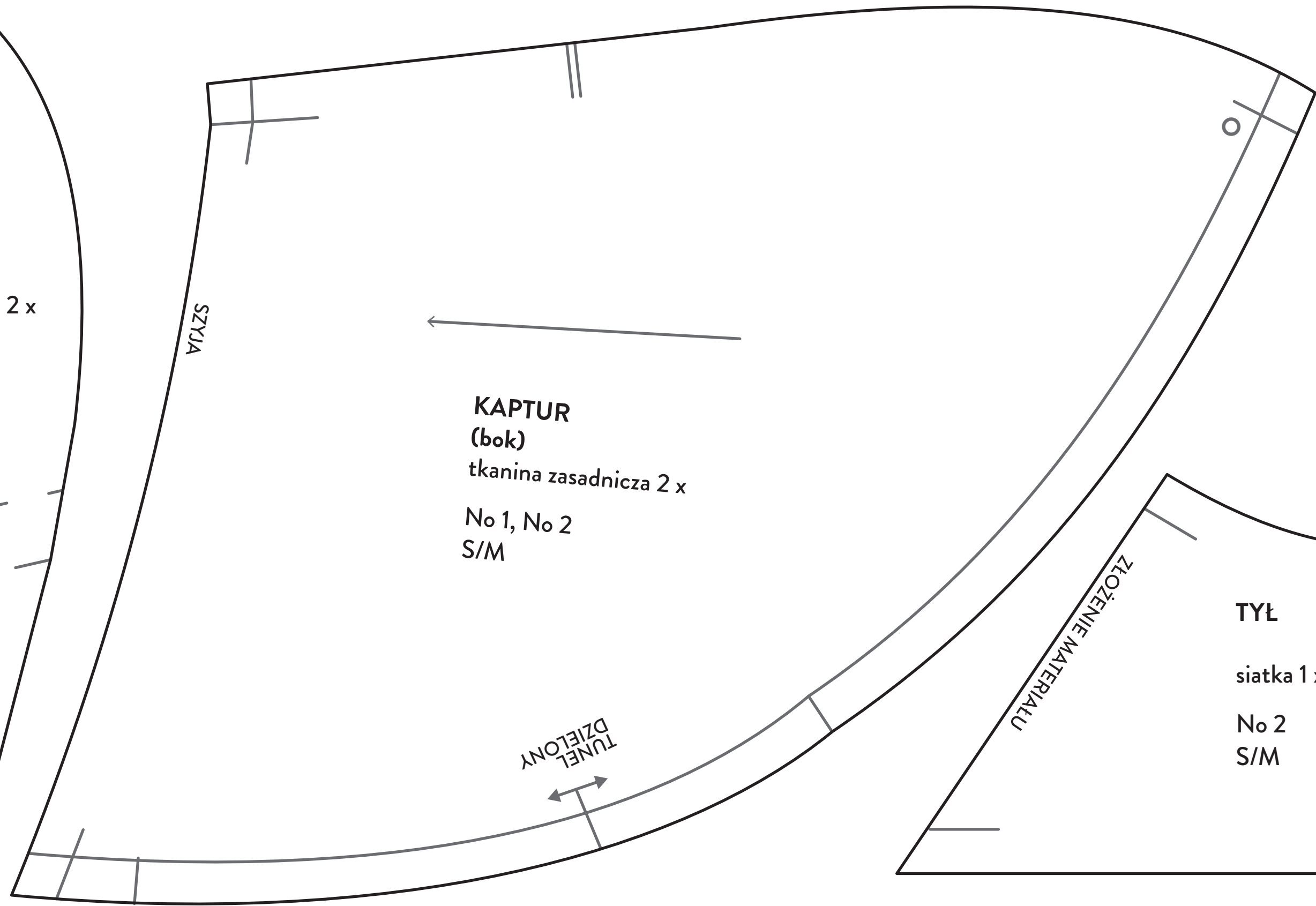
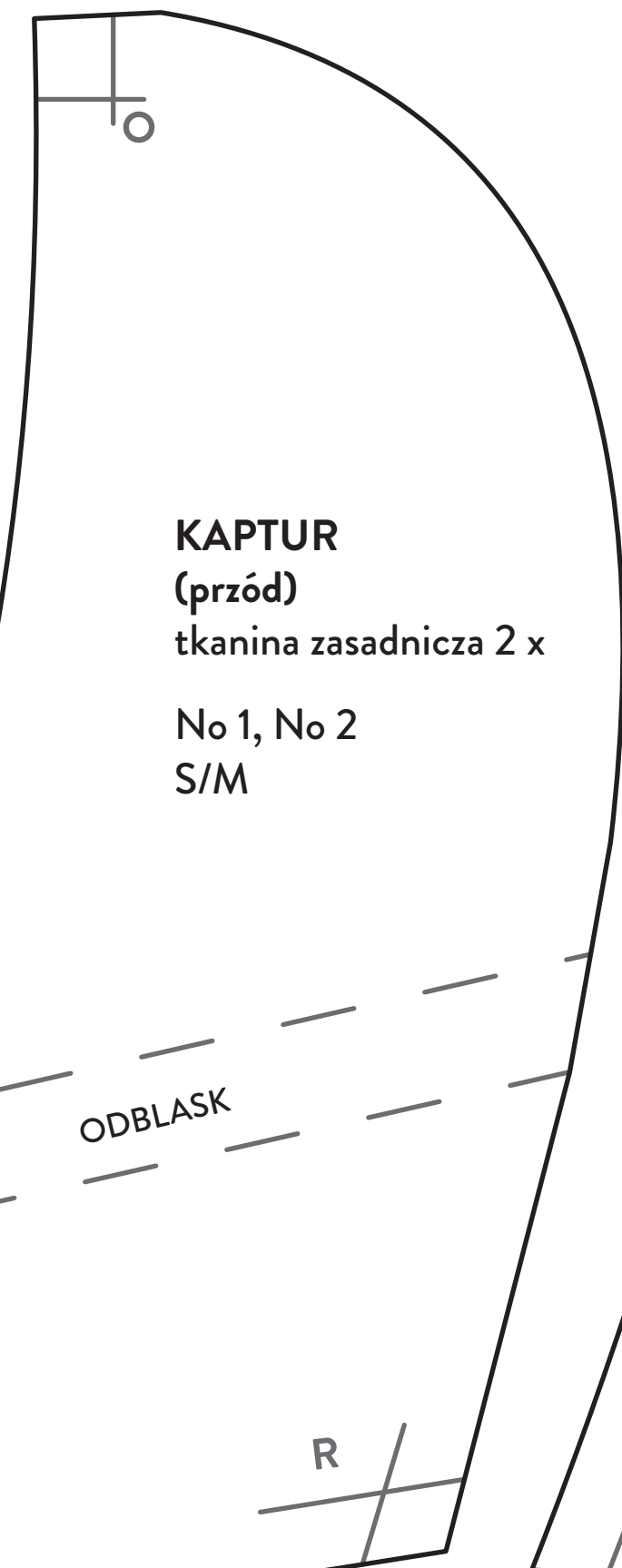
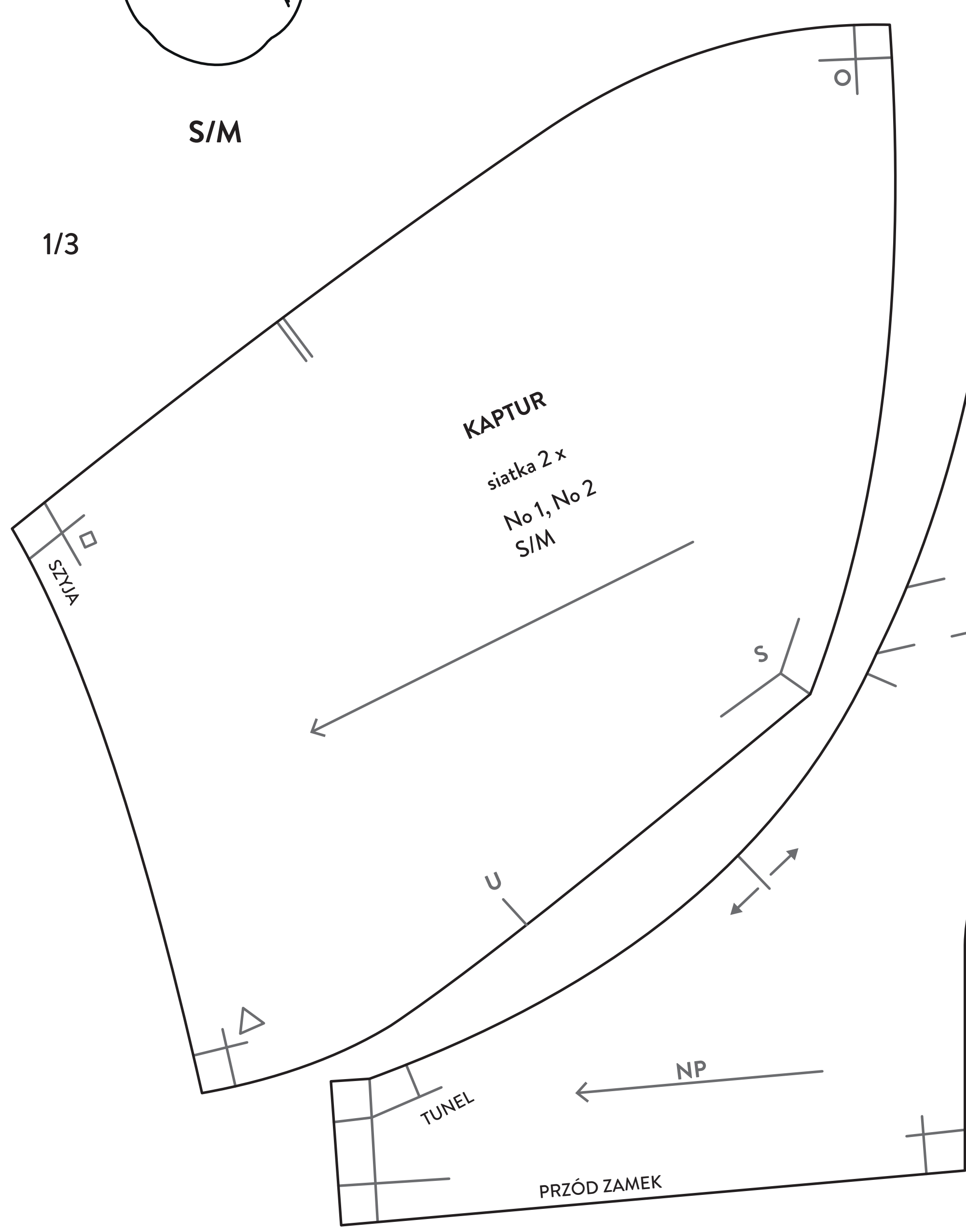
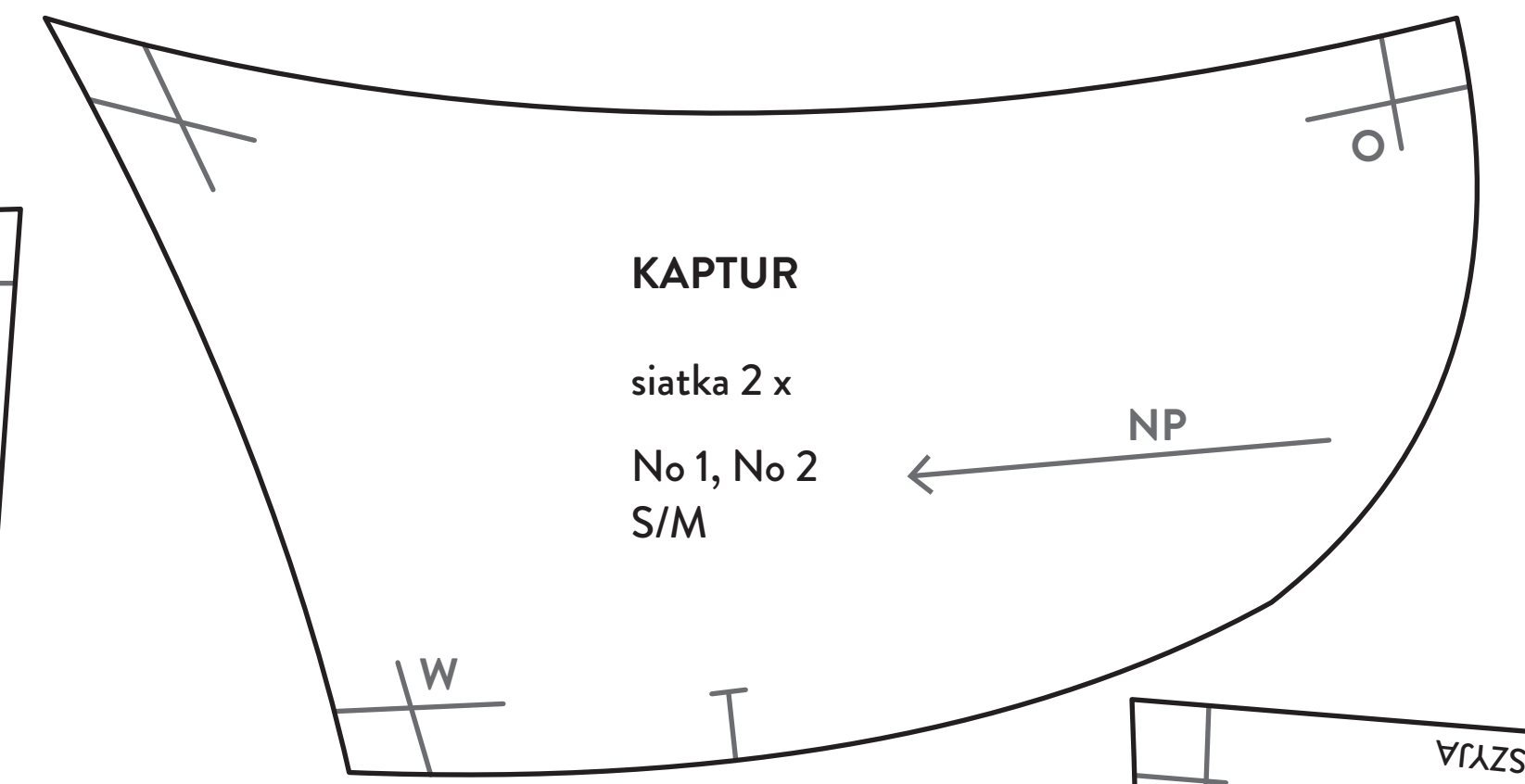
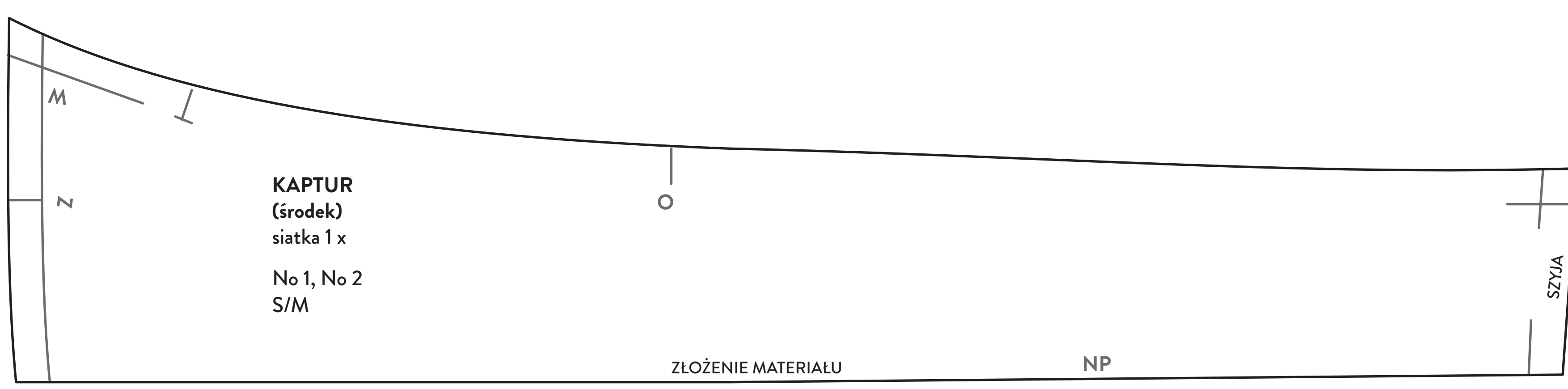
uni.

Typ 2



S/M

1/3



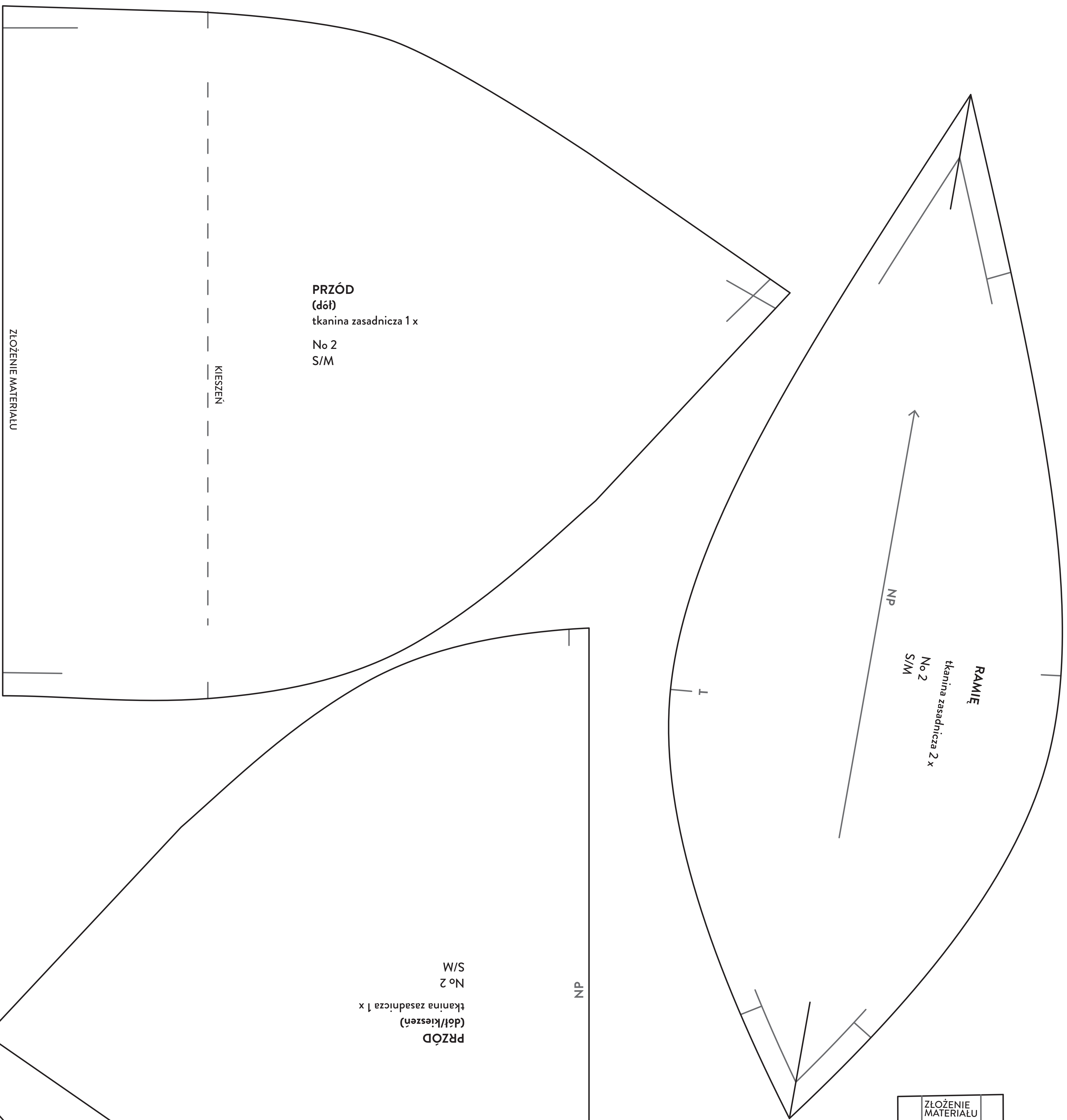


S/M

TYL (pelerynka/parka) tkanina zasadnicza 2 x	No 2 S/M, L/XL
RZEP	

PRZÓD (listwa/dół) tkanina zasadnicza 1 x	No 2 S/M	NP	ZŁOŻENIE LISTWY	ZAMEK
ZŁOŻENIE MATERIAŁU				

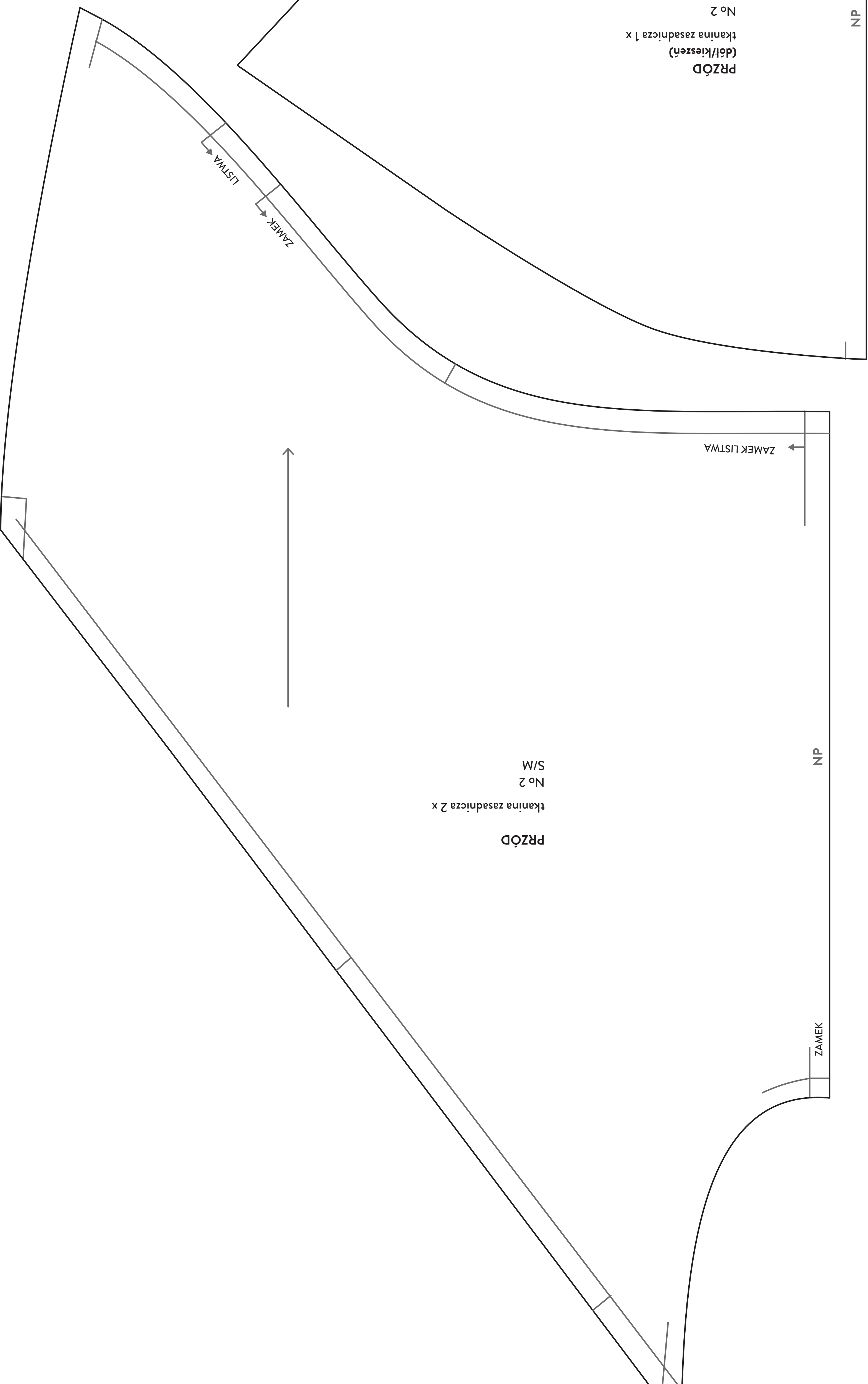
REKAW (obrycie) tkanina zasadnicza 2 x	No 1 S/M
ZŁOŻENIE MATERIAŁU	

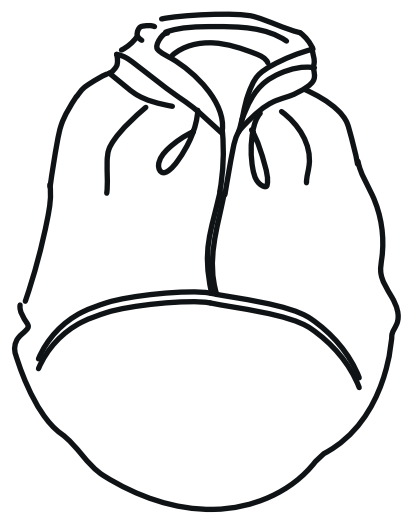


KAPTUR (tunel tył) tkanina zasadnicza 1 x	No 1, No 2 S/M	NP   BOK	PODWINIĘCIE
ZŁOŻENIE MATERIAŁU			

PRZÓD (listwa) tkanina zasadnicza 1 x	No 1, No 2 S/M	ZŁOŻENIE LISTWY	NP	KURTKA	KAPTUR
ZŁOŻENIE MATERIAŁU					

KAPTUR (pas środkowy) tkanina zasadnicza 1 x	No 1, No 2 S/M	ZŁOŻENIE MATERIAŁU	NP
ZŁOŻENIE MATERIAŁU			





S/M

