

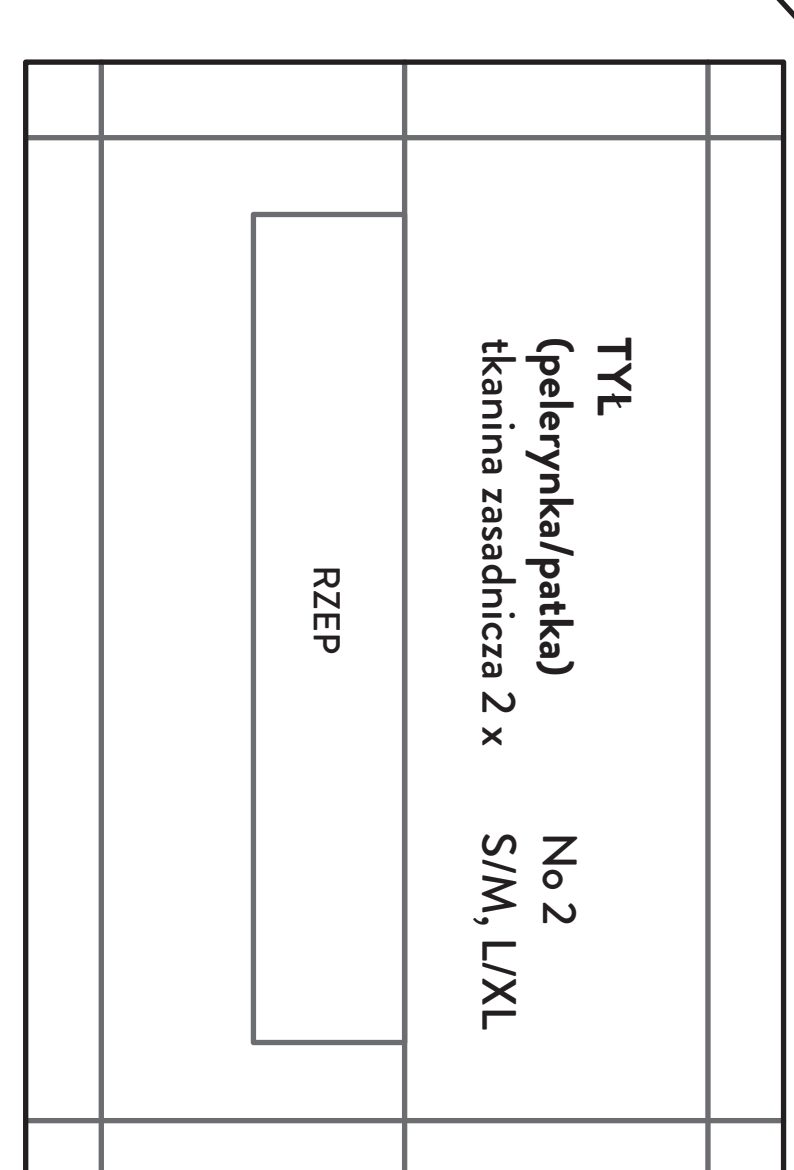
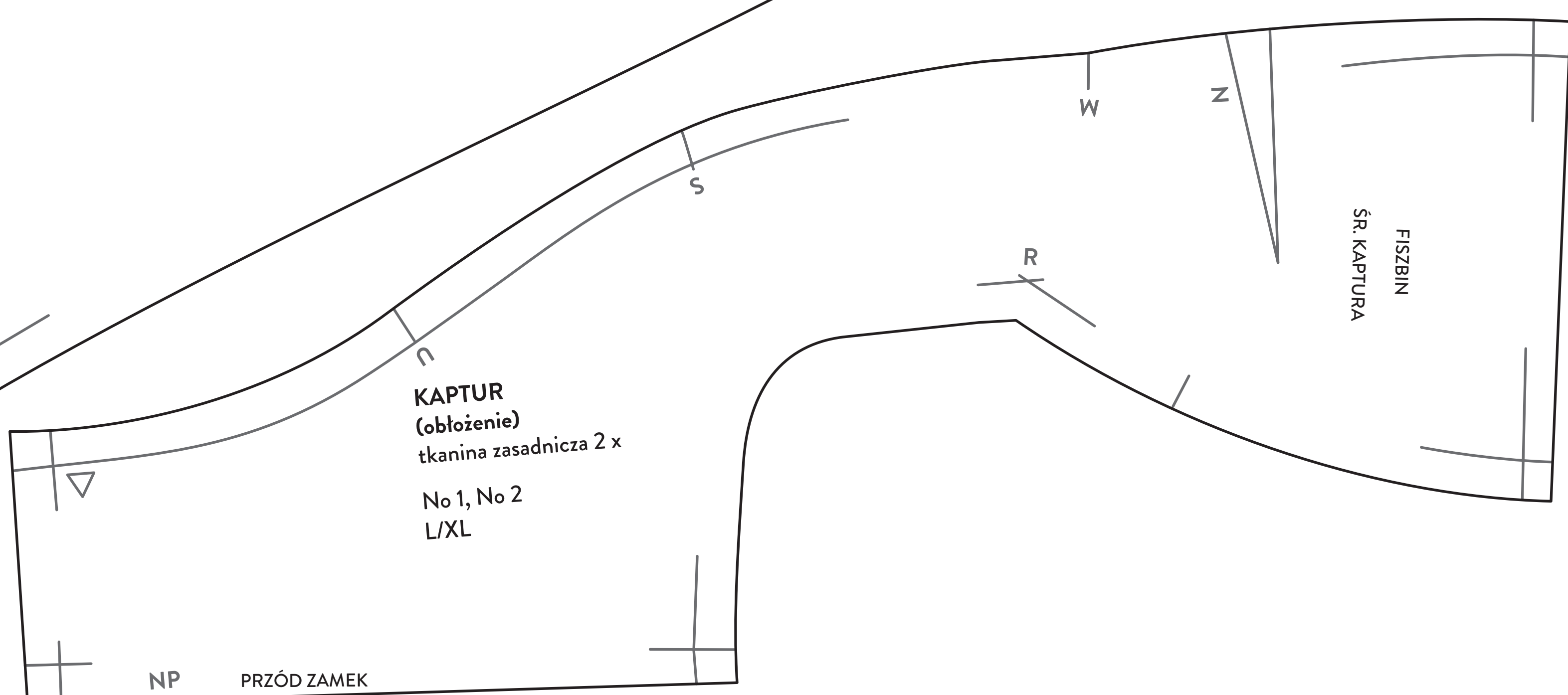
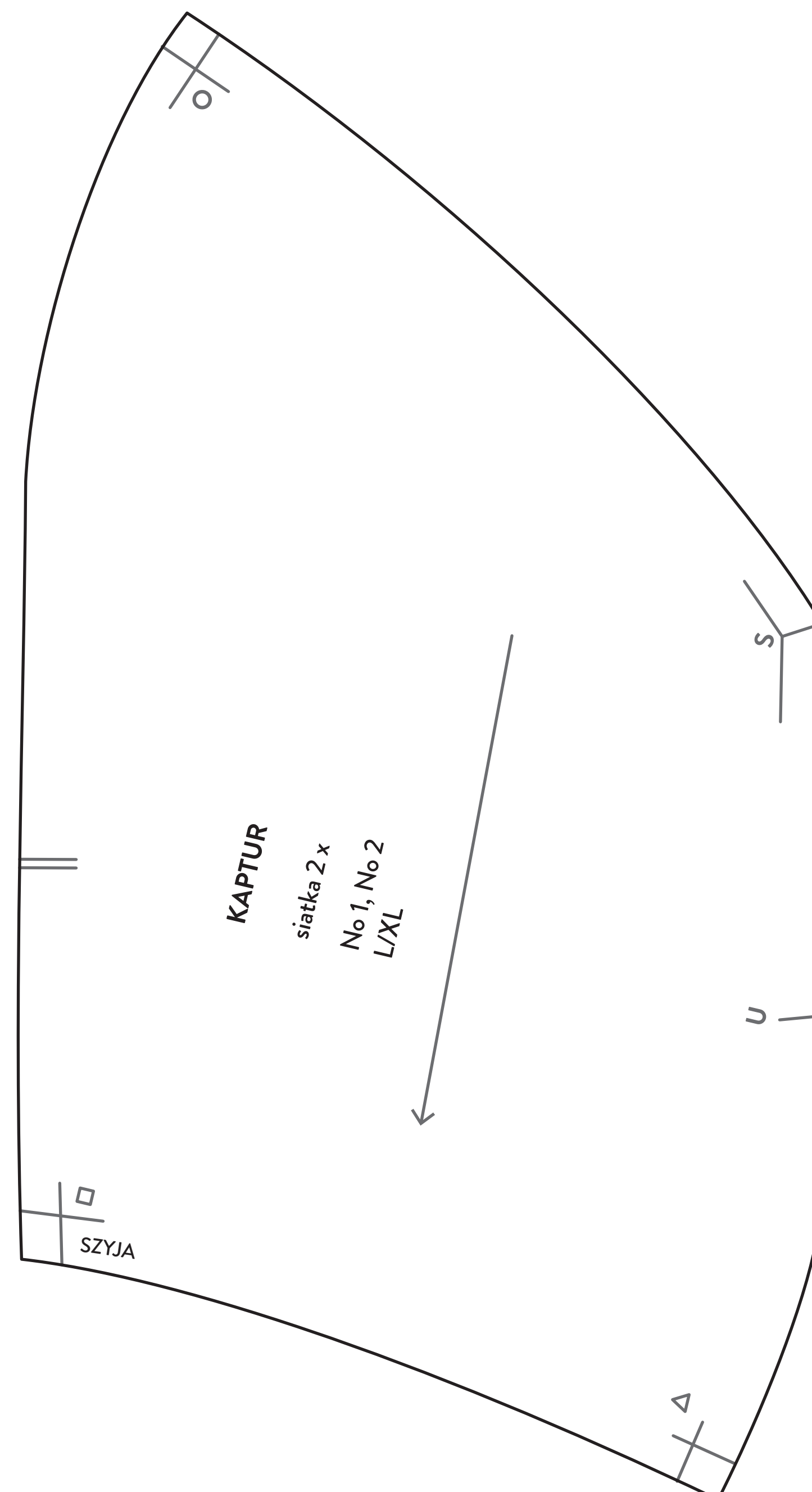
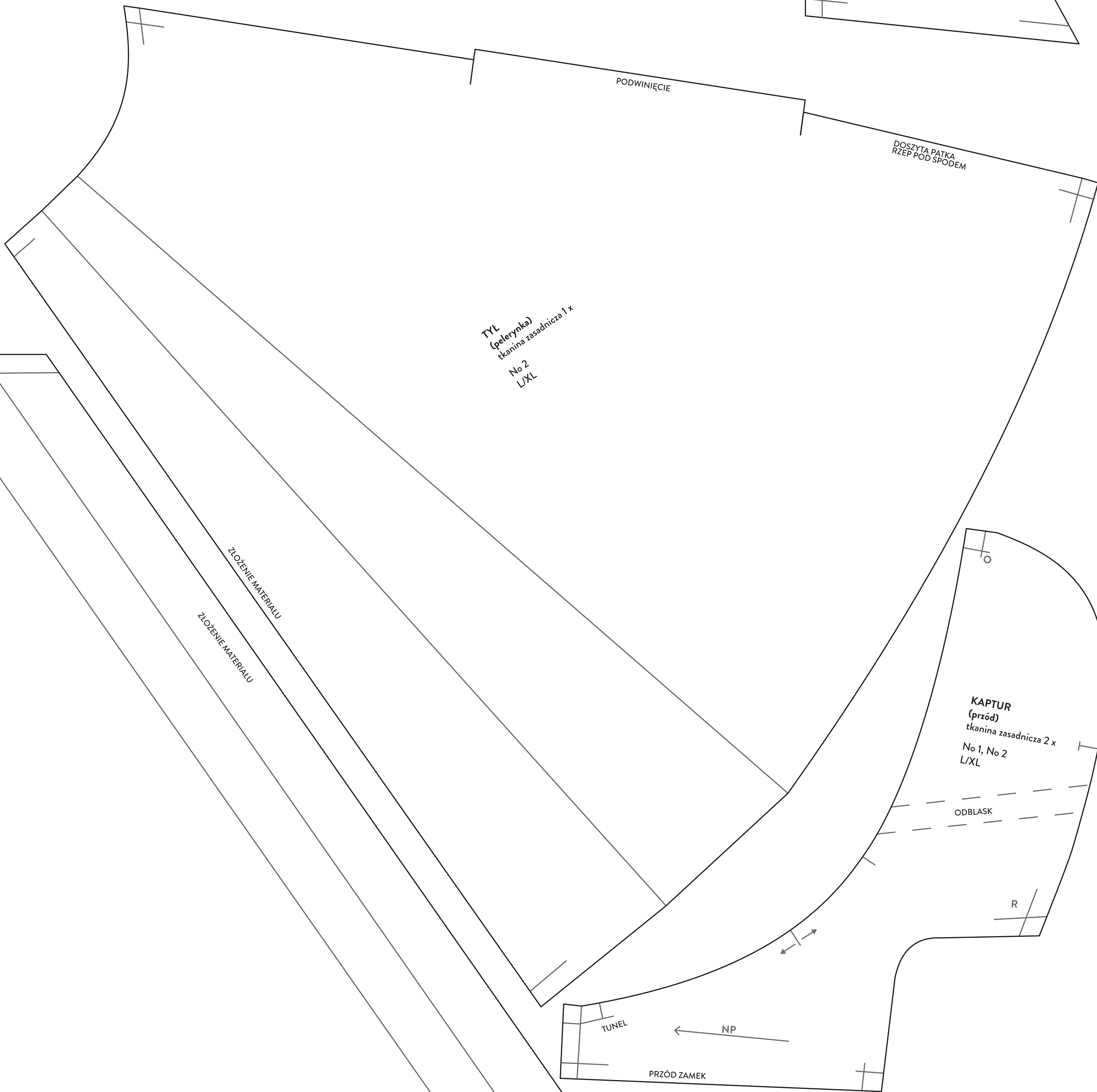
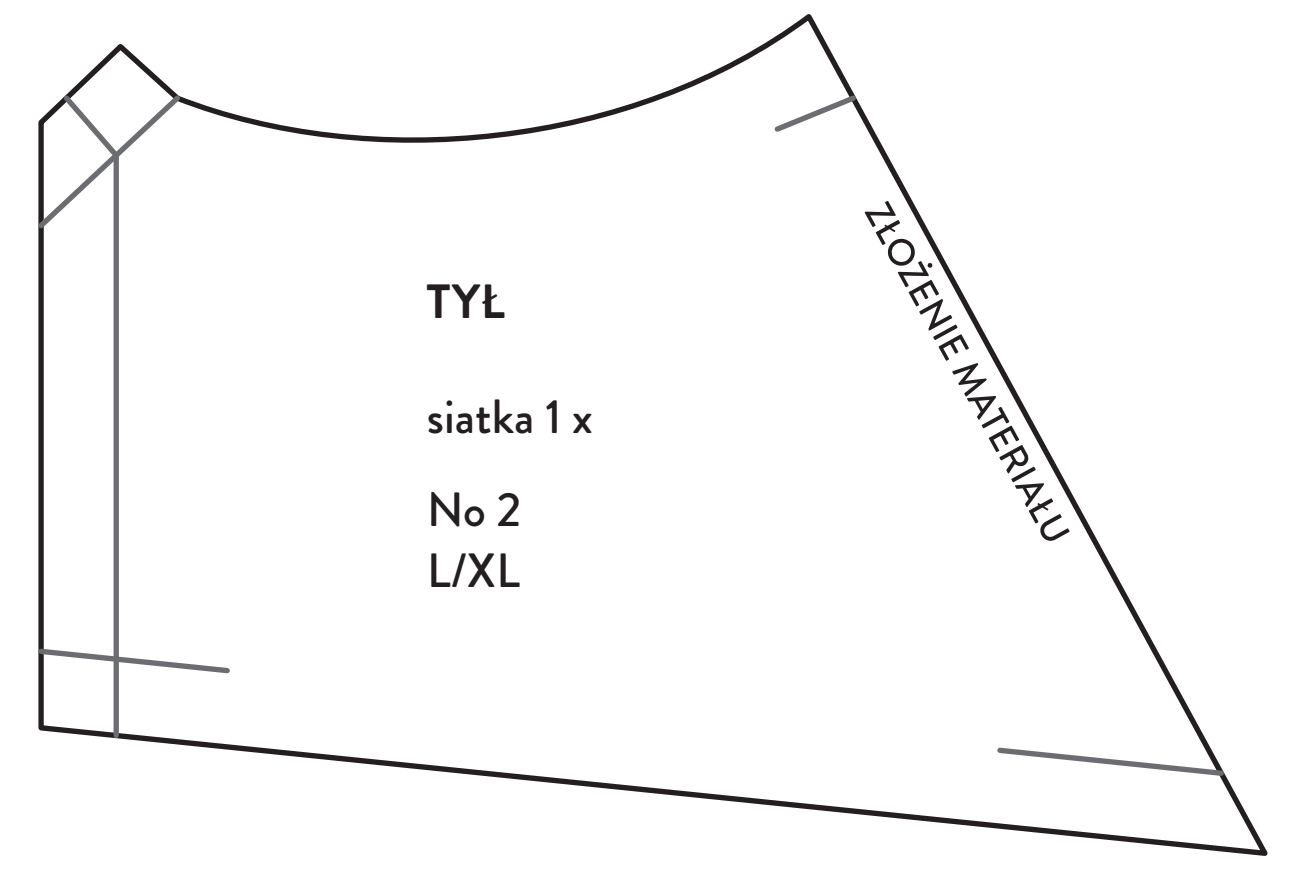
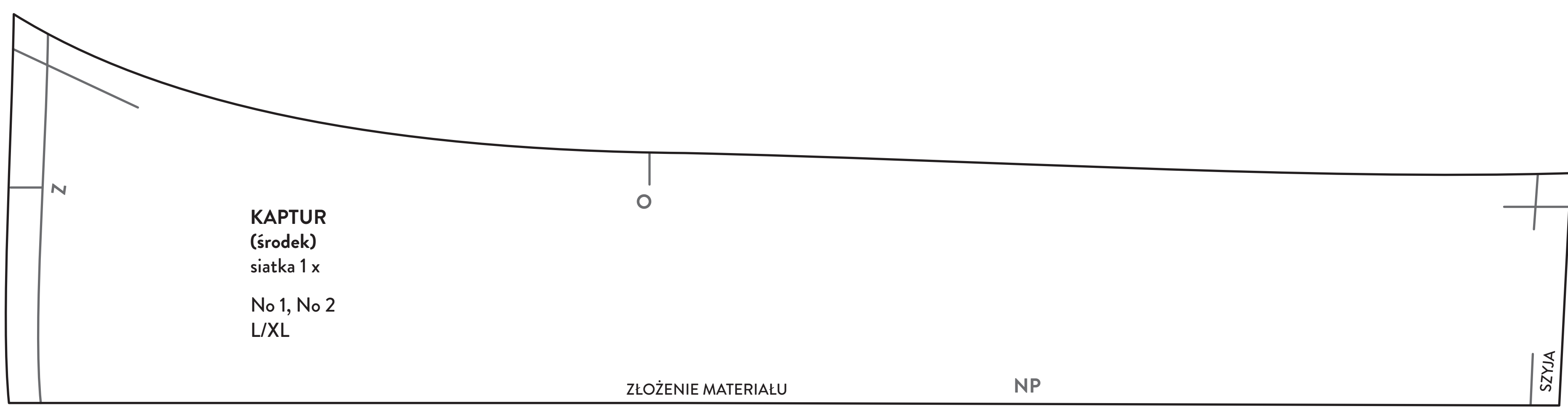
uni.

Typ 2



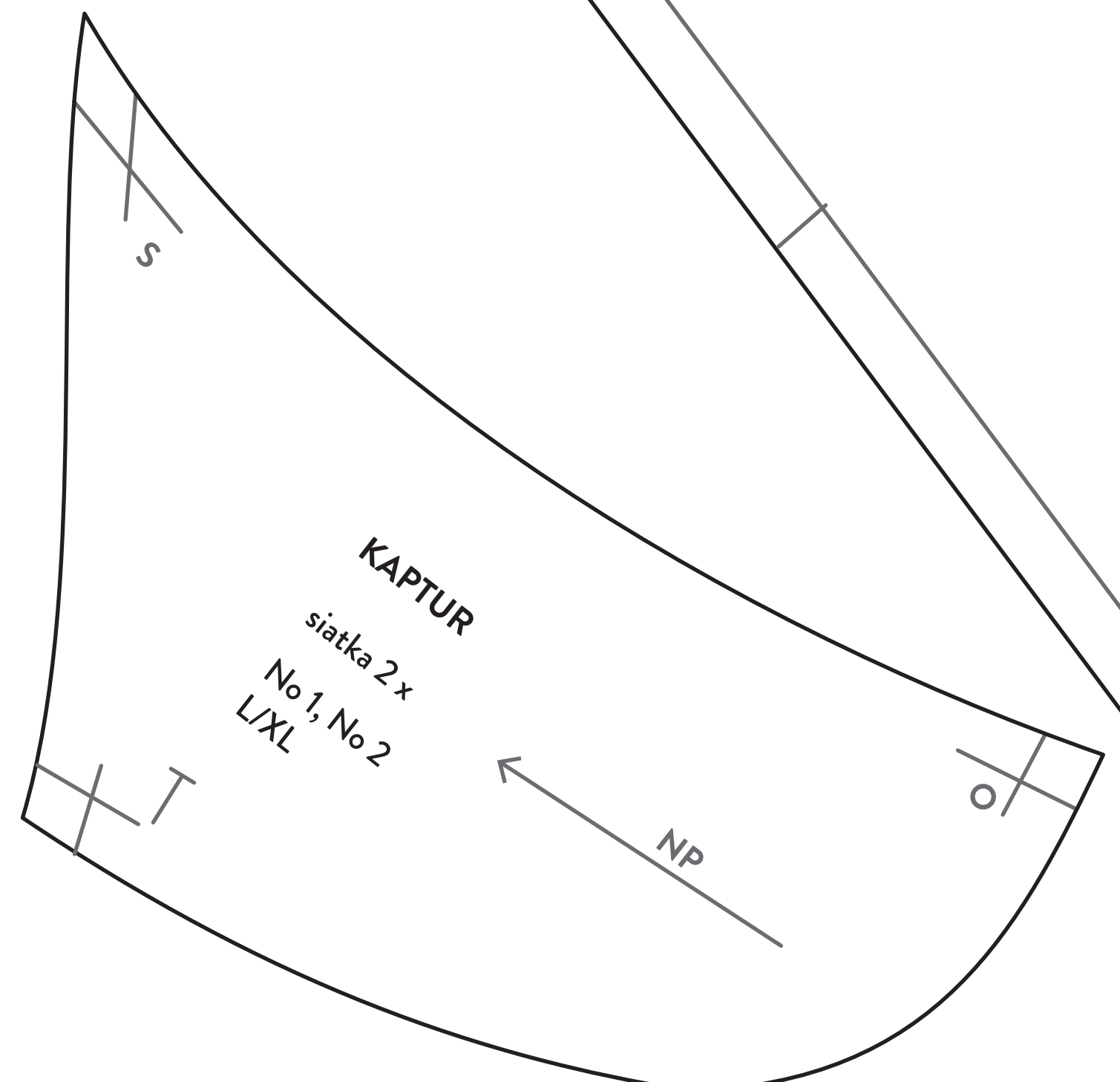
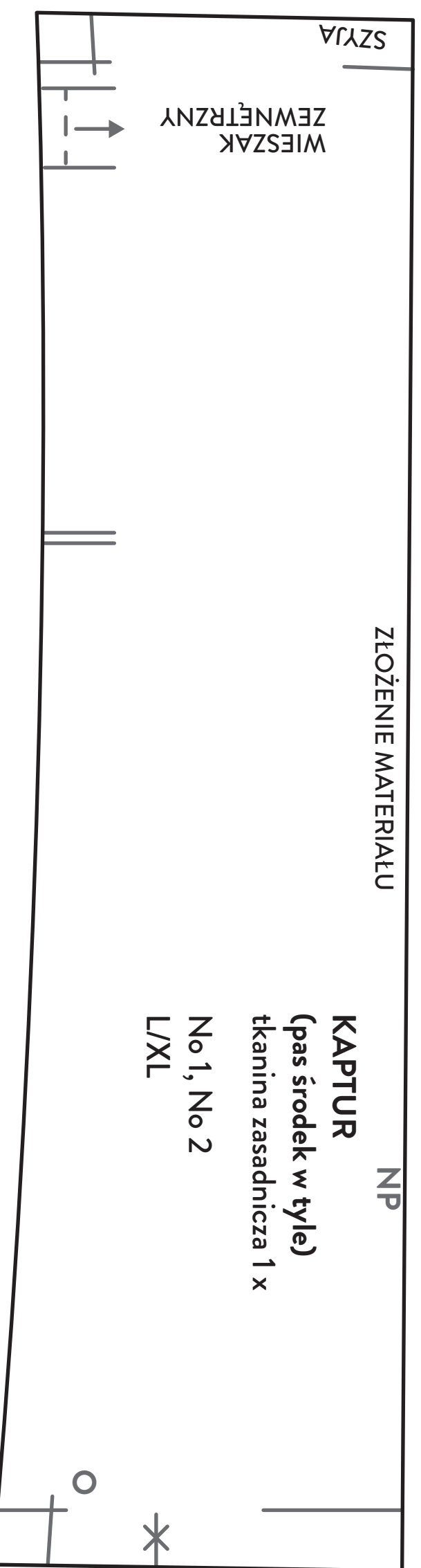
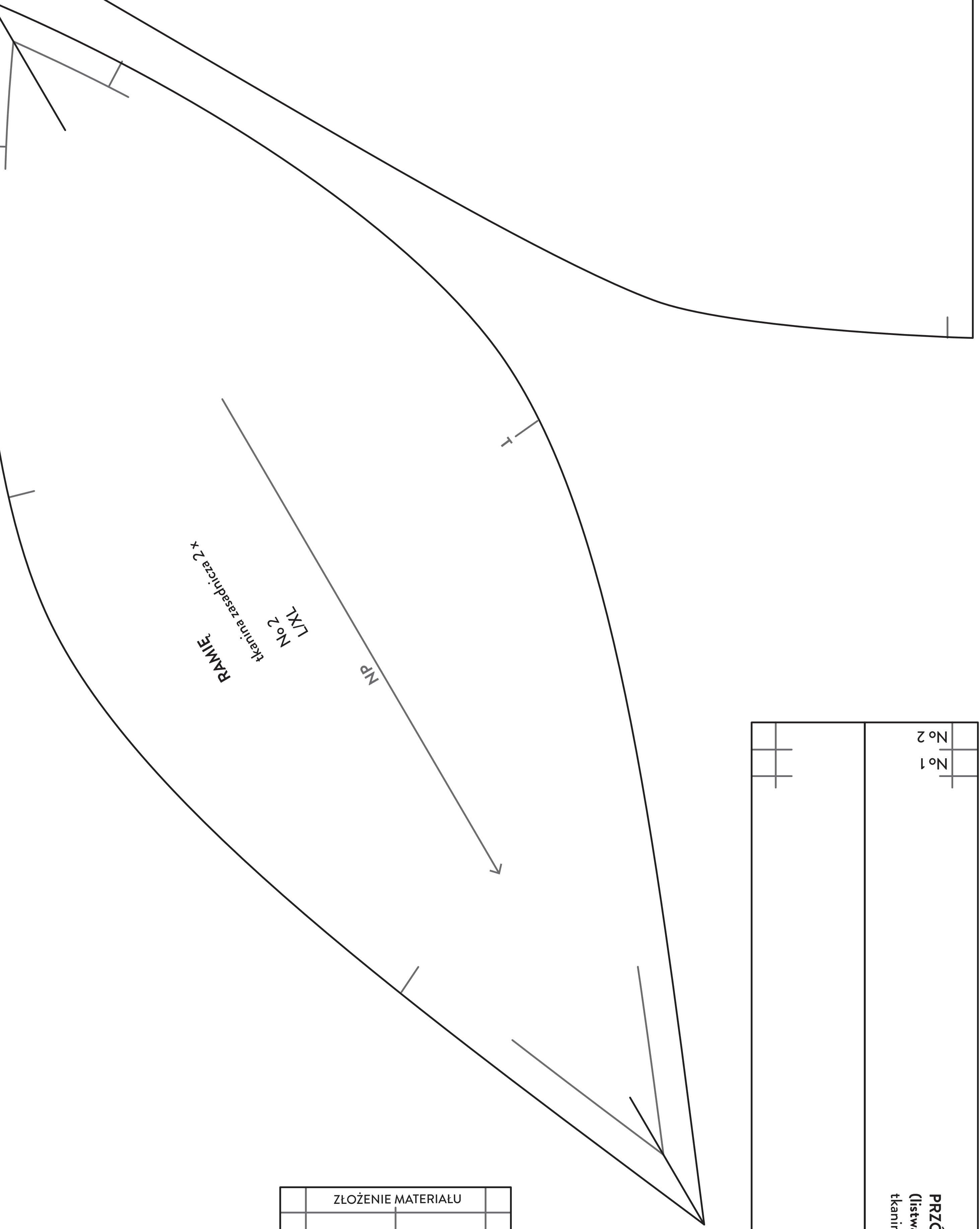
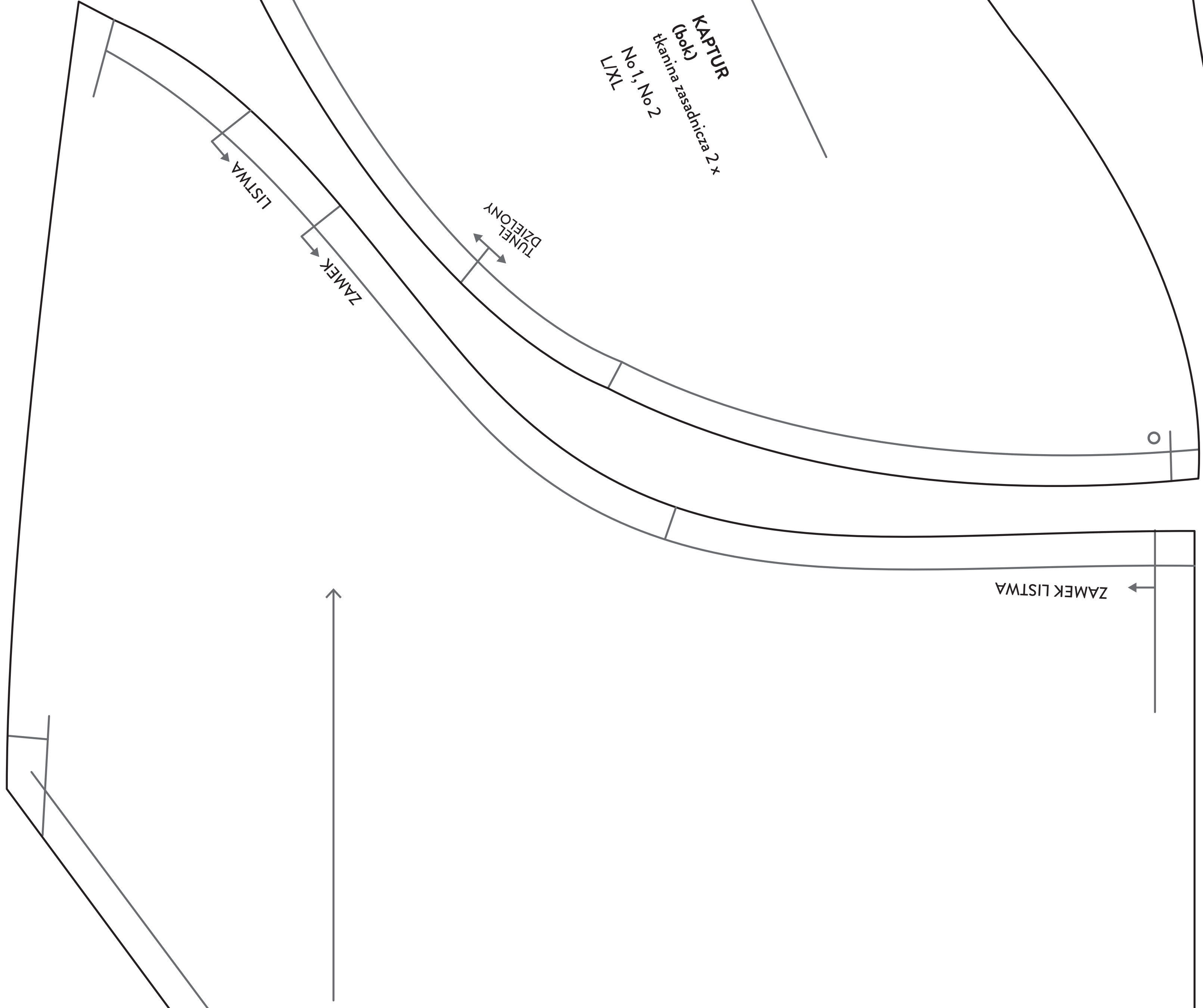
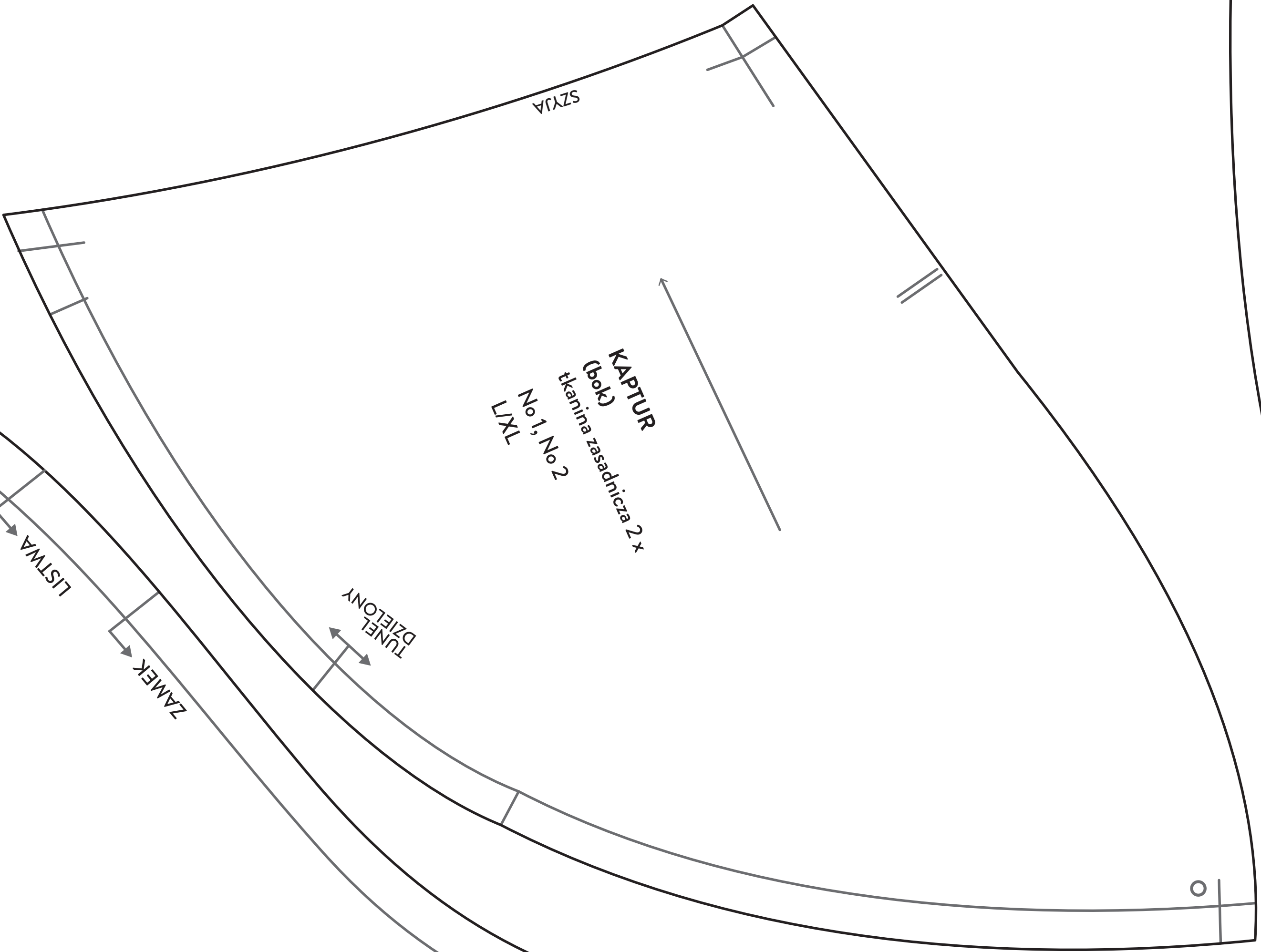
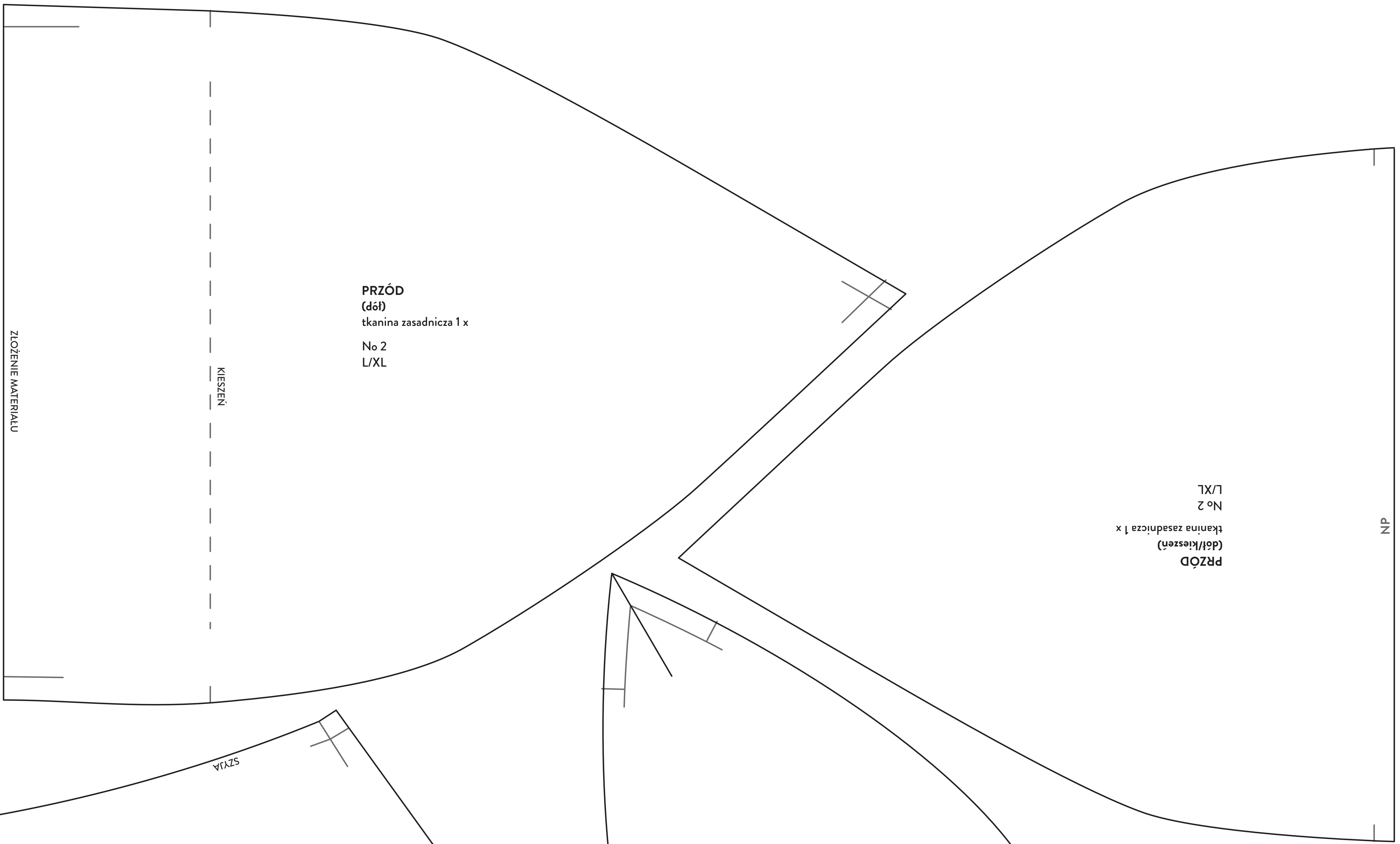
L/XL

1/3





L/XL



L/XL

No 2

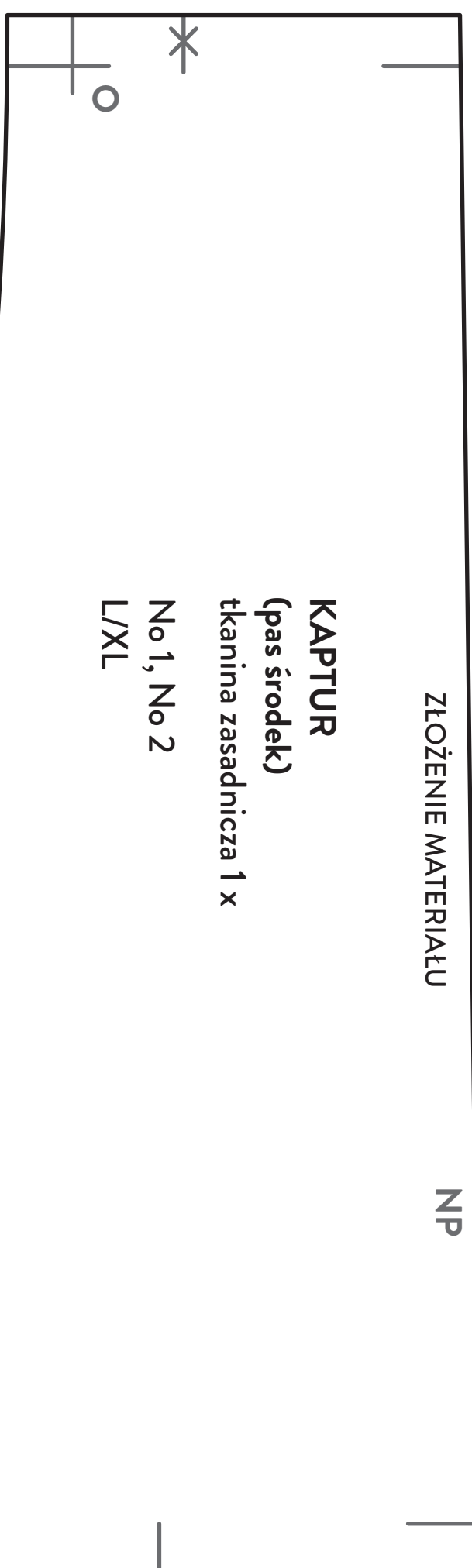
tkanina zasadnicza 2 x

PRZÓD

NP

ZAMEK

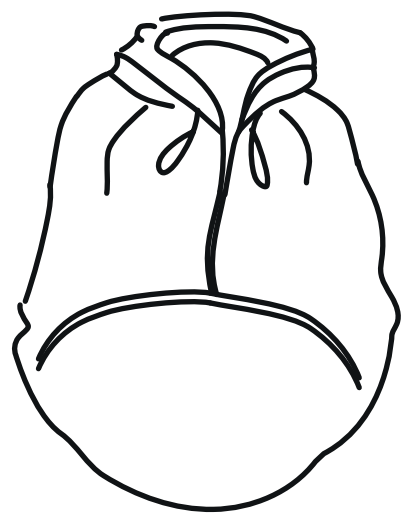
R



ZŁOŻENIE MATERIAŁU	
PRZÓD (listwa/dół) tkanina zasadnicza 1 x	No 2 L/XL
	NP
	ZŁOŻENIE LISTWY
	ZAMEK

ZŁOŻENIE MATERIAŁU	
KAPTUR (tunel tył) tkanina zasadnicza 1 x	No 1, No 2 L/XL
	NP BOK
	PODWINIĘCIE

ZŁOŻENIE LISTWY	
PRZÓD (listwa) tkanina zasadnicza 1 x	No 1, No 2 L/XL
	NP
	KURTKA
	KAPTUR



L/XL

3/3

